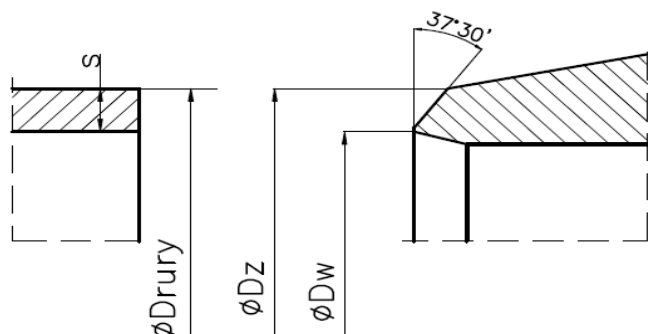


## Wymiary końcówek do spawania „zwane standardowymi”

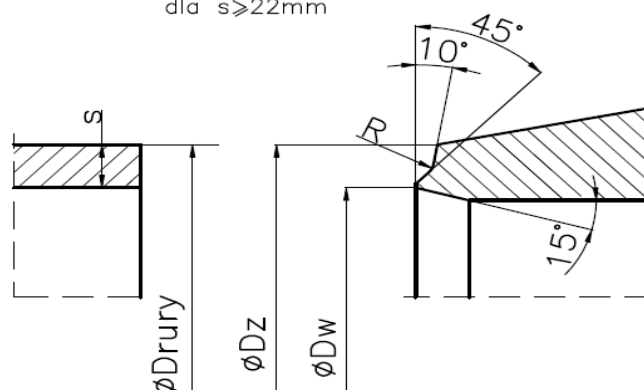
W dokumentacji np. kwestionariuszu oferty/zapytania zapisujemy wymiar :

Drury x s (średnica zewnętrzna rury x grubość rury)

dla  $s < 22\text{mm}$



dla  $s \geq 22\text{mm}$



| DN | Wymiar     | PN 40       | PN 63       | PN 100       | PN 160       | PN 250       | PN 320       | PN 400       | PN500        | PN630        |
|----|------------|-------------|-------------|--------------|--------------|--------------|--------------|--------------|--------------|--------------|
| 10 | Dz max     | 23          | 23          | 23           | 32           | 28           | 28           | 28           | B / O        | B / O        |
|    | Dz         | 20          | 20          | 20           | 20           | 20           | 20           | 20           | 20           | 24           |
|    | Dw         | 13          | 13          | 13           | 13           | 12           | 12           | 10           | 9,5          | 11,5         |
|    | Drury<br>s | 17,2<br>2   | 17,2<br>2   | 17,2<br>2    | 17,2<br>2    | 17,2<br>2,6  | 17,2<br>2,6  | 17,2<br>3,6  | 17,2<br>4    | 21,3<br>5    |
| 15 | Dz max     | 23          | 32          | 32           | 32           | 28           | 28           | 43           | 43           | 43           |
|    | Dz         | 22          | 22          | 22           | 22           | 22           | 22           | 28           | 28           | 35           |
|    | Dw         | 17          | 17          | 17           | 17           | 16           | 15           | 17           | 16           | 18,5         |
|    | Drury<br>s | 21,3<br>2   | 21,3<br>2   | 21,3<br>2    | 21,3<br>2    | 21,3<br>2,6  | 21,3<br>3,2  | 26,9<br>5    | 26,9<br>5,6  | 33,7<br>8    |
| 20 | Dz max     | 30          | 33          | 33           | 33           | 43           | 43           | B / O        | B / O        | B / O        |
|    | Dz         | 28          | 28          | 28           | 28           | 28           | 28           | 35           | 35           | 44           |
|    | Dw         | 22          | 22          | 21,5         | 21           | 19,5         | 19           | 21           | 21,5         | 21,5         |
|    | Drury<br>s | 26,9<br>2,3 | 26,9<br>2,3 | 26,9<br>2,6  | 26,9<br>2,9  | 26,9<br>3,6  | 26,9<br>4    | 31,8<br>5,6  | 33,7<br>6,3  | 38<br>8,8    |
| 25 | Dz max     | 35          | 35          | 35           | 43           | 43           | 43           | B / O        | B / O        | B / O        |
|    | Dz         | 35          | 35          | 35           | 35           | 35           | 35           | 44           | 44           | 54           |
|    | Dw         | 28,5        | 28,5        | 28,5         | 27           | 26,5         | 24           | 29           | 26           | 25           |
|    | Drury<br>s | 33,7<br>2,6 | 33,7<br>2,6 | 33,7<br>2,6  | 33,7<br>3,2  | 33,7<br>3,6  | 33,7<br>5    | 42,4<br>7,1  | 42,4<br>8,8  | 48,3<br>12,5 |
| 32 | Dz max     | 45          | 60          | 60           | 60           | 77           | 77           | 77           | B / O        | B / O        |
|    | Dz         | 44          | 44          | 44           | 44           | 44           | 44           | 50           | 56           | 62           |
|    | Dw         | 37          | 36,5        | 36           | 34,5         | 32,5         | 31,5         | 33           | 32,5         | 33,5         |
|    | Drury<br>s | 42,4<br>2,6 | 42,4<br>2,9 | 42,4<br>3,2  | 42,4<br>4    | 42,4<br>5    | 42,4<br>5,6  | 48,3<br>8    | 51<br>10     | 60,3<br>14,2 |
| 40 |            | <b>PN40</b> | <b>PN63</b> | <b>PN100</b> | <b>PN160</b> | <b>PN250</b> | <b>PN320</b> | <b>PN400</b> | <b>PN500</b> | <b>PN630</b> |
|    | Dz max     | 52          | 62          | 62           | 62           | 77           | 77           | 77           | B / O        | B / O        |

|            |               |              |              |              |               |               |               |               |              |              |
|------------|---------------|--------------|--------------|--------------|---------------|---------------|---------------|---------------|--------------|--------------|
|            | Dz            | 50           | 50           | 50           | 50            | 50            | 50            | 62            | 65           | 80           |
|            | Dw            | 43           | 43           | 43           | 43            | 38,5          | 36            | 40            | 43           | 43,5         |
|            | Drury<br>s    | 48,3<br>2,6  | 48,3<br>2,6  | 48,3<br>2,6  | 48,3<br>2,6   | 48,3<br>5     | 48,3<br>6,3   | 60,3<br>11    | 63,5<br>11   | 76,1<br>17,5 |
| <b>50</b>  | <i>Dz max</i> | 64,5         | 75           | 75           | 75            | 77            | 77            | 77            | B / O        | B / O        |
|            | Dz            | 62           | 62           | 62           | 62            | 62            | 77            | 77            | 83           | 92           |
|            | Dw            | 54           | 54           | 54           | 52,5          | 45            | 59,5          | 49,5          | 49,5         | 51,5         |
|            | Drury<br>s    | 60,3<br>3,2  | 60,3<br>3,2  | 60,3<br>3,2  | 60,3<br>4     | 60,3<br>8     | 76,1<br>8,8   | 76,1<br>14,2  | 76,1<br>14,2 | 88,9<br>20   |
| <b>65</b>  | <i>Dz max</i> | 95           | 89           | 89           | 89            | 97            | 97            | B / O         | B / O        | B / O        |
|            | Dz            | 77           | 77           | 77           | 77            | 77            | 91            | 91            | 91           | 117          |
|            | Dw            | 69           | 69           | 69           | 65            | 59,5          | 68            | 62            | 59           | 76,5         |
|            | Drury<br>s    | 76,1<br>3,6  | 76,1<br>3,6  | 76,1<br>3,6  | 76,1<br>5,6   | 76,1<br>8,8   | 88,9<br>11    | 88,9<br>14,2  | 88,9<br>16   | 114,3<br>20  |
| <b>80</b>  | <i>Dz max</i> | 106          | 109          | 109          | 108           | 120           | 120           | B / O         | B / O        | B / O        |
|            | Dz            | 91           | 91           | 91           | 91            | 117           | 117           | 117           | 117          | 144          |
|            | Dw            | 81           | 81           | 81           | 76,5          | 93            | 87,5          | 81            | 76,5         | 88           |
|            | Drury<br>s    | 88,9<br>4    | 88,9<br>4    | 88,9<br>4    | 88,9<br>6,3   | 114,3<br>11   | 114,3<br>14,2 | 114,3<br>17,5 | 114,3<br>20  | 139,7<br>28  |
| <b>100</b> | <i>Dz max</i> | 136          | 134          | 134          | 134           | 147           | 146           | B / O         | B / O        | B / O        |
|            | Dz            | 117          | 117          | 117          | 117           | 144           | 144           | 144           | 155          | 172          |
|            | Dw            | 104          | 104          | 104          | 98,5          | 116,5         | 109,5         | 102           | 106          | 109          |
|            | Drury<br>s    | 114,3<br>5   | 114,3<br>5   | 114,3<br>5   | 114,3<br>8    | 139,7<br>12,5 | 139,7<br>16   | 139,7<br>20   | 152,4<br>25  | 168,3<br>32  |
| <b>125</b> | <i>Dz max</i> | 154          | 165          | 165          | 165           | B / O         | B / O         | B / O         | B / O        | B / O        |
|            | Dz            | 144          | 144          | 144          | 144           | 172           | 172           | 172           | 201          | 201          |
|            | Dw            | 130,5        | 130,5        | 127          | 120,5         | 138,5         | 130,5         | 126,5         | 134          | 127          |
|            | Drury<br>s    | 139,7<br>4,5 | 139,7<br>4,5 | 139,7<br>6,3 | 139,7<br>10   | 168,3<br>16   | 168,3<br>20   | 168,3<br>22,2 | 193,7<br>32  | 193,7<br>36  |
| <b>150</b> | <i>Dz max</i> | 183          | 205          | 205          | 205           | B / O         | B / O         | B / O         | B / O        | B / O        |
|            | Dz            | 172          | 172          | 172          | 172           | 182           | 201           | 201           | 223          | 223          |
|            | Dw            | 156,5        | 156,5        | 154          | 144,5         | 144,5         | 151,5         | 146,5         | 152          | 145          |
|            | Drury<br>s    | 168,3<br>5,6 | 168,3<br>5,6 | 168,3<br>7,1 | 168,3<br>12,5 | 177,8<br>17,5 | 193,7<br>22,2 | 193,7<br>25   | 219,1<br>36  | 219,1<br>40  |
| <b>200</b> | <i>Dz max</i> | 241          | 273          | 273          | 273           | B / O         | B / O         | B / O         | B / O        | B / O        |
|            | Dz            | 223          | 223          | 223          | 223           | 223           | 252           | 278           | 278          | 332          |
|            | Dw            | 204,5        | 204,5        | 199,5        | 189           | 182           | 191,5         | 205,5         | 189,5        | 212,5        |
|            | Drury<br>s    | 219,1<br>7,1 | 219,1<br>7,1 | 219,1<br>10  | 219,1<br>16   | 219,1<br>20   | 244,5<br>28   | 273<br>36     | 273<br>45    | 323,9<br>60  |
| <b>250</b> |               | <b>PN40</b>  | <b>PN63</b>  | <b>PN100</b> | <b>PN160</b>  | <b>PN250</b>  | <b>PN320</b>  | <b>PN400</b>  | <b>PN500</b> | <b>PN630</b> |
|            | <i>Dz max</i> | 287          | B / O        | B / O        | B / O         | B / O         | B / O         | B / O         | B / O        | B / O        |
|            | Dz            | 278          | 278          | 278          | 278           | 278           | 329           | 329           | 365          | 365          |
|            | Dw            | 256,5        | 255          | 248,5        | 242,5         | 226,5         | 255,5         | 248,5         | 244          | 235          |
|            | Drury<br>s    | 273<br>8     | 273<br>8,8   | 273<br>12,5  | 273<br>16     | 273<br>25     | 323,9<br>36   | 323,9<br>40   | 355,6<br>60  | 355,6<br>65  |

|            |               |              |               |               |              |              |              |              |  |  |
|------------|---------------|--------------|---------------|---------------|--------------|--------------|--------------|--------------|--|--|
| <b>300</b> | <i>Dz max</i> | <i>B / O</i> | <i>B / O</i>  | <i>B / O</i>  | <i>B / O</i> | <i>B / O</i> | <i>B / O</i> | <i>B / O</i> |  |  |
|            | Dz            | 329          | 329           | 329           | 329          | 329          | 362          | 413          |  |  |
|            | Dw            | 306,5        | 301           | 295,5         | 285,5        | 271,5        | 287          | 312          |  |  |
|            | Drury<br>s    | 323,9<br>8   | 323,9<br>11   | 323,9<br>14,2 | 323,9<br>20  | 323,9<br>28  | 355,6<br>36  | 406,4<br>50  |  |  |
| <b>350</b> | <i>Dz max</i> | <i>B / O</i> | <i>B / O</i>  | <i>B / O</i>  | <i>B / O</i> | <i>B / O</i> | <i>B / O</i> | <i>B / O</i> |  |  |
|            | Dz            | 362          | 362           | 362           | 413          | 413          | 413          | 464          |  |  |
|            | Dw            | 336,5        | 330           | 324           | 358,5        | 339          | 321          | 344          |  |  |
|            | Drury<br>s    | 355,6<br>8,8 | 355,6<br>12,5 | 355,6<br>16   | 406,4<br>25  | 406,4<br>36  | 406,4<br>45  | 457<br>60    |  |  |
| <b>400</b> | <i>Dz max</i> | <i>B / O</i> | <i>B / O</i>  | <i>B / O</i>  | <i>B / O</i> | <i>B / O</i> | <i>B / O</i> | <i>B / O</i> |  |  |
|            | Dz            | 413          | 413           | 464           | 464          | 464          | 516          | 516          |  |  |
|            | Dw            | 383          | 377           | 417           | 408,5        | 382          | 403,5        | 385,5        |  |  |
|            | Drury<br>s    | 406,4<br>11  | 406,4<br>14,2 | 457<br>20     | 457<br>25    | 457<br>40    | 508<br>55    | 508<br>65    |  |  |
| <b>500</b> | <i>Dz max</i> | <i>B / O</i> | <i>B / O</i>  | <i>B / O</i>  | <i>B / O</i> | <i>B / O</i> | <i>B / O</i> |              |  |  |
|            | Dz            | 516          | 516           | 518           | 571          | 571          | 619          |              |  |  |
|            | Dw            | 478          | 474,5         | 467,5         | 500,5        | 474,5        | 495,5        |              |  |  |
|            | Drury<br>s    | 508<br>14,2  | 508<br>16     | 508<br>20     | 559<br>30    | 559<br>45    | 610<br>60    |              |  |  |